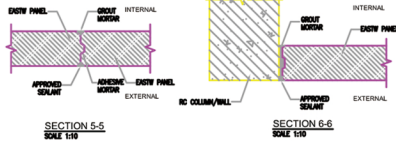


# GGBS Panel Typical Drawing



SECTION 5-5  
SCALE 1/10

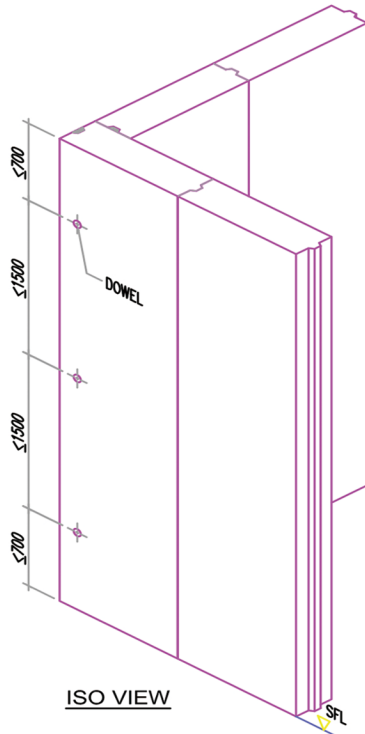
SECTION 6-6  
SCALE 1/10



TOP & BOT END BRACKET  
130x50x50x311



ANGLE FIXING BRACKET  
250x50x50x311

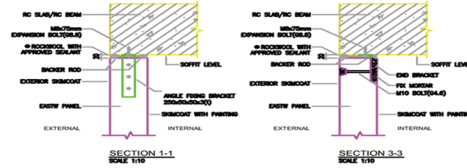


ISO VIEW

CORNER TURN DETAILS

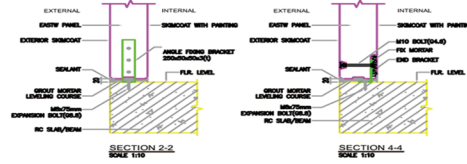
## Standard Specifications:

S/No	Thickness (mm)	Max. Length (mm)	Width (mm)	Main Bar	Dist Bar	Wind Load (kN/m <sup>2</sup> )
1	100	2800	600			0.50
2	125	3800	600			0.50
3	150	4800	600	4-R6(E.F)	R6-500(E.F)	0.50
4	200	6000	600	4-R6(E.F)	R6-500(E.F)	0.50



SECTION 1-1  
SCALE 1/10

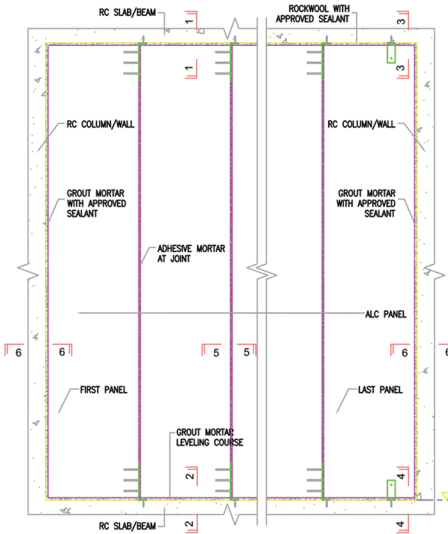
SECTION 3-3  
SCALE 1/10



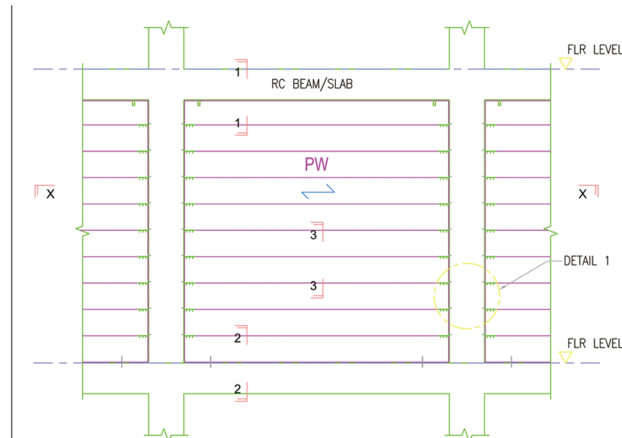
SECTION 2-2  
SCALE 1/10

SECTION 4-4  
SCALE 1/10

NOTE:  
-SEALANT IS RECOMMENDED FOR FIRE COMPARTMENT WALL ONLY.  
-THE ADHESIVE SEALANT IS REQUIRED FOR THE FIRE COMPARTMENT WALL.  
-CONCRETE BRICKS OR BRICKS ARE ALLOWED FOR



TYPICAL EASTW GGBS PANEL WALL ELEVATION  
SCALE 1:20  
FOR VERTICAL INSTALLATION



TYPICAL EASTW GGBS PANEL WALL ELEVATION  
(EMBEDDED IN RC STRUCTURE FRAME)  
SCALE 1:100  
FOR HORIZONTAL INSTALLATION

DESIGNER	DATE
DRAWN BY	CHECKED BY
GGBS GIBS SYSTEM/NOTATION	
SCALE 1:100 (ELEVATION)	
GIBS SYSTEM/NOTATION	
SCALE 1:100 (ELEVATION)	
DATE	SCALE